

# EVERGREEN PARK SUBDIVISION NO.1

## LOTS 271 - 282, 286 - 291, 383 - 396, 399 - 405

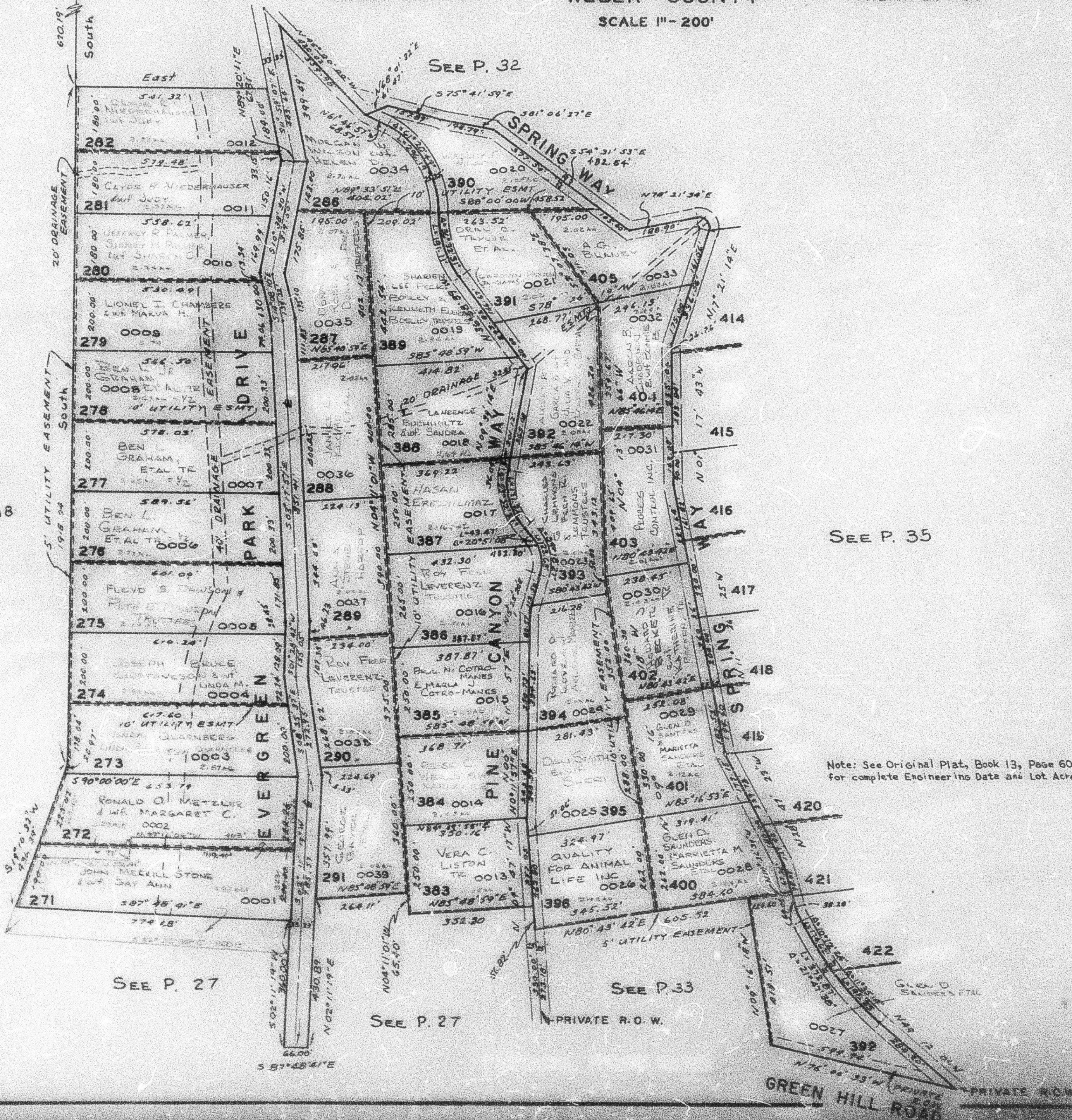
TAXING UNIT 58

WEBER COUNTY

PREFIX 23-031

SCALE 1"=200'

S 89° 57' 00" W 19/20  
2534.79' 30/29 T.7N., R.3E.



SEE P. 32

SEE P. 18

SEE P. 35

Note: See Original Plat, Book 13, Page 60 for complete Engineering Data and Lot Acreages.

SEE P. 27

SEE P. 27

SEE P. 33

